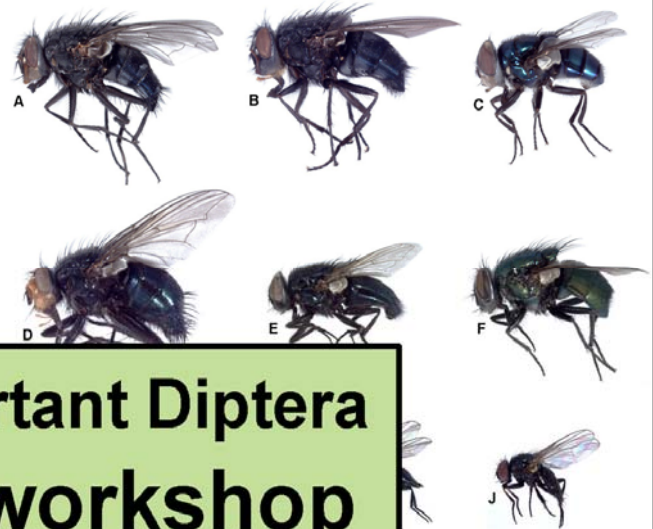
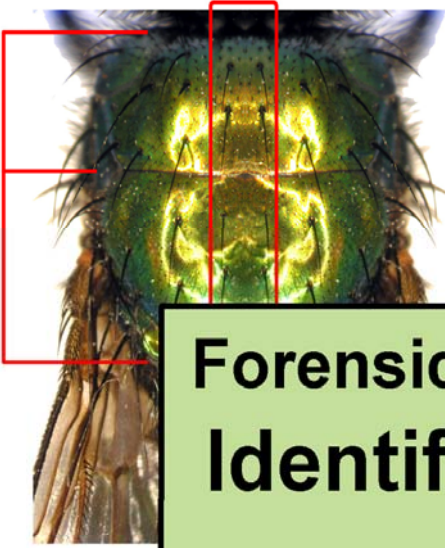


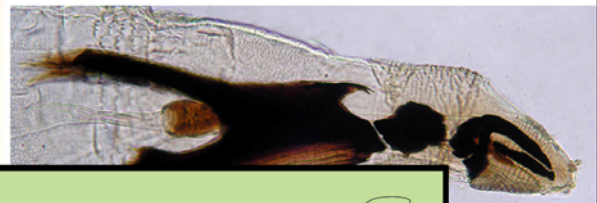
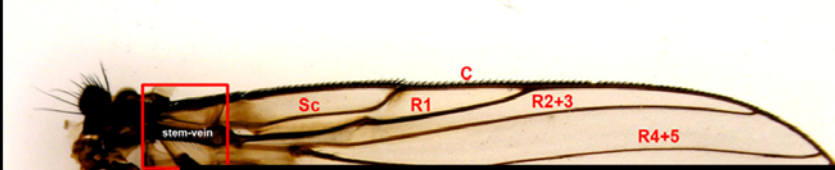
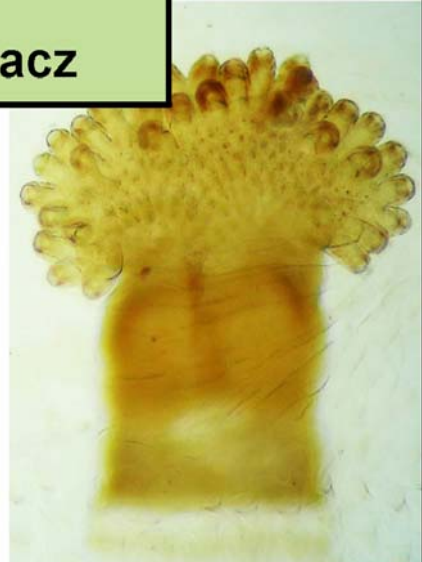
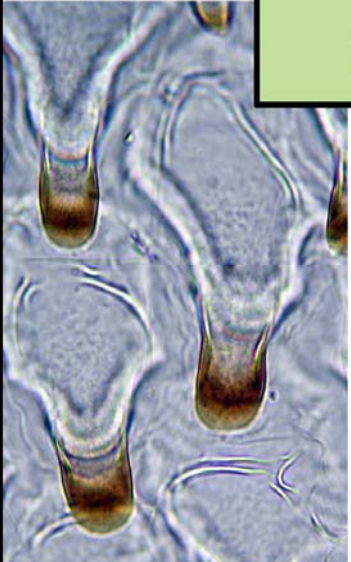
acrostichal bristles

presutural area  
postsutural area

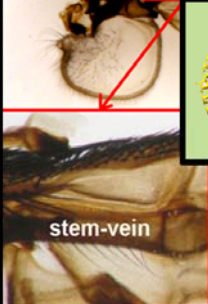




# Forensically important Diptera Identification workshop

Krzysztof Szpila, Andrzej Grzywacz



Nicolaus Copernicus University  
European Association for Forensic Entomology



# PROGRAMME

## 11 April (Monday). Key to families of Diptera.

Introduction: Diagnostic morphological characters in identification of forensically important Diptera.

Material: European Diptera of forensic importance pinned and preserved in EtOH, original key for identification of European families of forensically important Diptera, preview of larvae of the most important families (Calliphoridae, Fanniidae, Heleomyzidae, Muscidae, Sarcophagidae, Sepsidae), access to reference collection.



## 12 April (Tuesday). Adults of Calliphoridae.

Introduction: Diagnostic morphological characters in identification of forensically important Calliphoridae – adult flies.

Material: Holarctic Calliphoridae of forensic importance pinned and preserved in EtOH, original pictorial key for identification of European species of forensic importance (included species: *Calliphora loewi*, *C. subalpina*, *C. vicina*, *C. vomitoria*, *Cynomya mortuorum*, *Chrysomya albiceps*, *Ch. megacephala*, *Phormia regina*, *Protophormia terraenovae*, *Lucilia ampullacea*, *L. caesar*, *L. illustris*, *L. sericata*, *L. silvarum*), access to reference collection (56 Holarctic species of necrophagous Calliphoridae).





### 13 April (Wednesday). Larvae of Calliphoridae.

Introduction: Diagnostic morphological characters in identification of larvae of forensically important Calliphoridae.

Material: intact third instar larvae preserved in EtOH, microscope slides of the morphological details (cephaloskeletons, spinulation, anterior and posterior spiracles), original pictorial key for identification of European species of forensic importance (included species: *Calliphora loewi*, *C. subalpina*, *C. vicina*, *C. vomitoria*, *Cynomya mortuorum*, *Chrysomya albiceps*, *Ch. megacephala*, *Phormia regina*, *Protophormia terraenovae*, *Lucilia ampullacea*, *L. caesar*, *L. illustris*, *L. sericata*, *L. silvarum*).



### 14 April (Thursday). Adults of Sarcophagidae, Muscidae and Fanniidae.

Introduction: Diagnostic morphological characters in identification of forensically important Sarcophagidae, Muscidae and Fanniidae – adult flies.

Material: European Sarcophagidae, Muscidae and Fanniidae of forensic importance pinned and preserved in EtOH, original pictorial keys for identification of European species of forensic importance (included species: *Phylloteles pictipennis*, *Sarcophaga africa*, *S. albiceps*, *S. argyrostoma*, *S. caerulescens*, *S. carnaria*, *S. croceipalpis*, *S. cultellata*, *S. dux*, *S. hirticrus*, *S. incisilobata*, *S. lehmanni*, *S. melanura*, *S. protuberans*, *S. similis*, *S. subvicina*, *S. teretirostris*, *S. tibialis*, *S. variegata*, *Sarcophila meridionalis*, *S. latifrons*, *Sarcotachina aegyptiaca*, *S. subcylindrica*, *S. umbrinervis*, *Wohlfahrtia nuba*, *Hydrotaea aenescens*, *H. capensis*, *H. dentipes*, *H. ignava*, *H. pilipes*, *H. similis*, *Musca domestica*, *M. autumnalis*, *Muscina levida*, *M. prolapsa*, *M. stabulans*, *Synthesiomyia nudiseta*, *Fannia canicularis*, *F. coracina*, *F. manicata*, *F. scalaris*), access to reference collection (about 200 European species of Sarcophagidae, Muscidae, Fanniidae).



## 15 April (Friday). Larvae of Sarcophagidae, Muscidae and Fanniidae.

Introduction: Diagnostic morphological characters in identification of forensically important Sarcophagidae, Muscidae and Fanniidae – third instar larvae.

Material: intact larvae preserved in EtOH, microscope slides of the morphological details (cephaloskeletons, spinulation, anterior and posterior spiracles), preview and preliminary keys for species of forensic importance (included species: *Sarcophaga africa*, *S. argyrostoma*, *S. caerulescens*, *S. cultellata*, *S. melanura*, *S. tibialis*, *S. variegata*, *Sarcophila latifrons*, *H. dentipes*, *H. ignava*, *Musca domestica*, *Muscina prolapsa*, *M. stabulans*, *Synthesiomyia nudiseta*, *Fannia canicularis*, *F. coracina*, *F. manicata*, *F. scalaris*).



## **PRACTICAL INFORMATION**

### **Organizer:**

**Krzysztof Szpila, Ph.D. (Nicolaus Copernicus University in Toruń & European Association for Forensic Entomology)**

### **Location:**

**Department of Animal Ecology, Institute of Ecology and Environmental Protection, Faculty of Biology and Earth Sciences, Nicolaus Copernicus University, Gagarina 9, 87-100 Toruń, Poland**

**Maximum number of participants (in one edition): 12.**

**Date: 11-15 April 2011 (inclusive, five days).**

**Working day: 9<sup>00</sup>-13<sup>00</sup>, break, 14<sup>00</sup>-18<sup>00</sup>.**

## **TRAVEL TO POLAND**

**Note travel in Poland is cheap (low cost). The one-way fares are bookable on line and include seat reservation.**

**Fly to Warsaw and then train to Toruń. The one-way train ticket from Warsaw to Toruń is about 10€.**

## **ACCOMODATION**

**The organizers are able to book accommodation for participants in the University guest hostel (a 10 minute walk from the Faculty of Biology and Earth Science where the course will be held).**

**Prices: 1 person room – 60PLN/night, 2 person room – 50PLN/night (about 15€ or shared (2) 12€).**

**Participants interested in this accommodation are asked for early decision (number of available rooms is low).**

**We will provide Information concerning alternative accommodation in Torun if needed.**

## REGISTRATION FORM

Please complete the form and return it by e-mail to:

[szpila@biol.uni.torun.pl](mailto:szpila@biol.uni.torun.pl)

Family name:

First name:

Title:

Institution:

Address:

Telephone:

Fax:

e-mail:

Deadline for registration: 1 February 2011

**Please note that the number of places is limited: date of receiving of registration form decides on including on the list of participants.**

## FEE INFO

Cost (course only): 150€.

Payment can be made to account:

IBAN: PL 4511602202000000031748579

SWIFT: BIG B PL PW

Account owner: Nicolaus Copernicus Univeristy, Gagarina 11, 87-100  
Toruń, Poland

Bank name: Bank Millenium SA, ul. Stanislawo Zaryna 2A, 02-593  
Warszawa

Deadline for payment: 15 March 2011